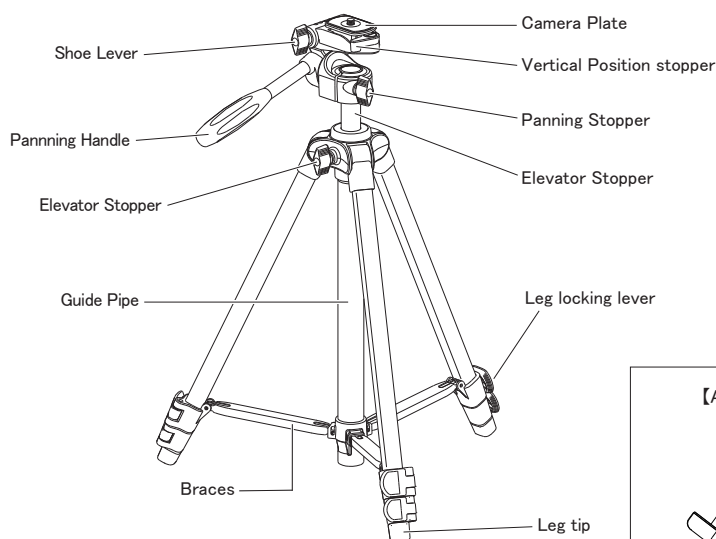
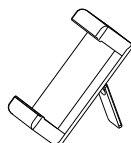


## Individual Part name

Thank you very much for purchasing Velbon tripod.  
Please read this manual carefully before your start to use.



【As a Stand】



Pick lever up from back side.

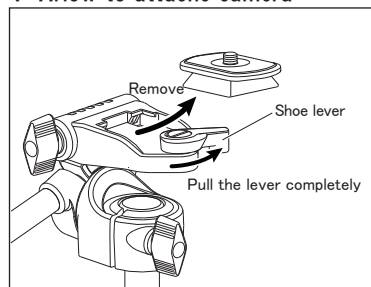
\*Specifications are subject to change without notice

## Specification

EX-230 II with SMARTPHONE HOLDER	
Head	FIXED( NOT CHANGEABLE)
Full extended height (Incl. elevator)	1220mm
Full extended height (Excl. elevator)	947mm
Elevator Slide	273mm
Minimum Height	Not available for low angle function
Folded Length	435mm
Leg Diameters	17/14/11mm
Number of section	3
Weight	775g
Suggested Loading weight	1kg
Max Loading weight	2kg
Quick Release Plate	QB-32
Smartphone Holder	Support phone size : 56mm~85mm (thickness less than 10mm) (Please note that your smartphone might not be held depending on the shape of smartphone or outer case even within the size above.)

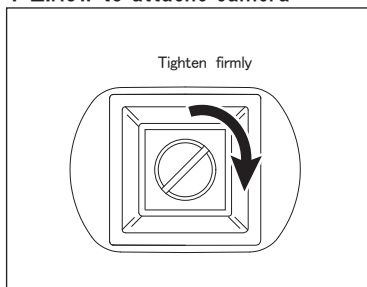
Above are average numbers based on the drawings on each assembling parts.

### 1-1.How to attach camera



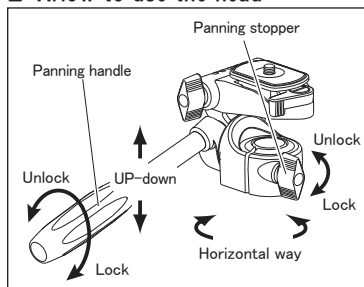
Raise up Shoe Lever until lock is released. Slide out the Quick-release to remove.

### 1-2.How to attach camera



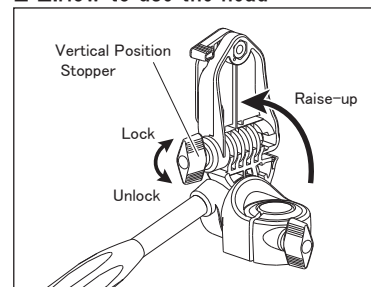
Adjust the screw to the bottom of camera body then tighten with screw driver firmly.

### 2-1.How to use the head



Unlock the Panning handle by twisting to anti-clockwise direction, and can move Up-and down. Unlock Panning stopper, and can move to horizontal.

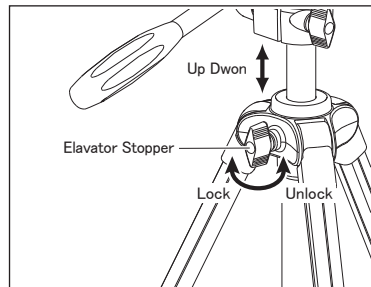
### 2-2.How to use the head



Unlock the Vertical Position stopper, and turn camera plate to vertical position to 90° degrees for the portrait photo.

⚠ Please make sure to hold your camera to attach tripod and operate for the desired position.

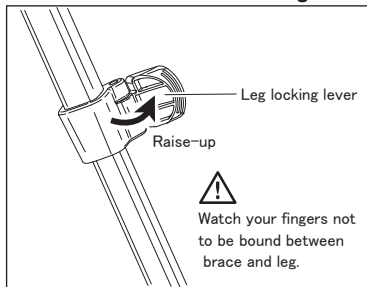
### 3.How to use elevator



Unlock elevator stopper, and rotate Crank handle to up or down to the desired height. Then lock the Elevator stopper.

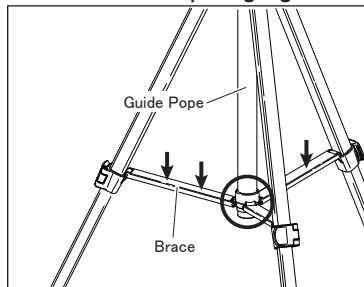
⚠ Hold your camera while operate the Elevator up or down.

### 4.How to extend and lock legs



To adjust leg extension, raise up Leg Locking lever and extend legs to the desired position then lock. Use upper part legs when it is not necessary to extend all legs till the maximum height.

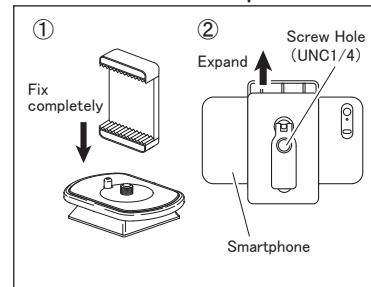
### 5.Caution when opening legs



When Open the leg, brace stopper should be end of guide pipe. If isn't that, push brace down, then reach to end of guide pipe. (Finally brace stopper make more steady.)

⚠ If isn't enough to open legs, tripod break down and be unstable.

### 6.How to attach smartphone holder



In case of taking picture with smartphone, fix enclosed smartphone holder with camera screw firmly. Then extend smartphone holder like above arrow's direction and set firmly. \*Screw hole locate at bottom and back side of smartphone holder, so please use depended on situation.

⚠ Before use, please make sure that smartphone has been fixed correctly.